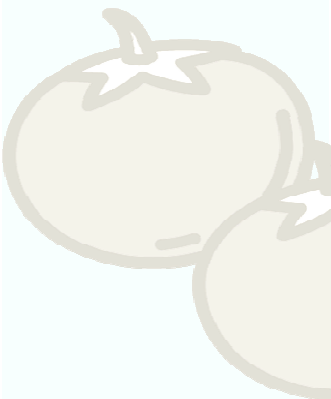


# PRODUCT TYPE

FRUITS	TYPE						
	Powder	Flakes	Crunchies	Flavor	Granules	Paste	Concentrate
Acai	•						
Acerola	•						
Apple	•	•	•	•			
Apricot	•	•	•				
Banana	•	•	•	•			
Blackberry	•	•		•			
Blackcurrant	•	•		•			
Blueberry	•	•	•	•	•		
Cherry	•	•		•			
Cranberry	•			•			
Coconut	•			•			
Cucumber	•						
Date	•	•	•				
Elderberry	•						
Grape	•			•			
Grapefruit	•			•			
Guava	•			•			
Kiwi	•			•			
Lemon	•	•	•	•			
Lime	•			•			
Lychee	•			•			
Mandarin	•			•			
Mango	•	•		•			
Melon	•			•			
Orange	•	•	•	•	•		
Papaya	•	•					
Passion Fruit	•			•			
Peach	•	•	•	•			
Pear	•	•	•		•		
Pineapple	•	•		•			
Plum	•			•			
Pomegranate	•			•			
Prune	•	•					
Pumpkin	•	•					•
Raspberry	•	•	•	•			
Strawberry	•	•	•	•	•		
Starfruits	•						
Tomato	•					•	
Watermelon	•						
Yumberry	•						



VEGETABLES	Type								
	Powder	Flakes	Crunchies	Flavor	Concentrate	Granules	Paste	Slice	Minced
Artichoke	•								
Asparagus	•								
Broccoli	•				•				
Carrot	•	•	•		•				
Celeriac	•								
Celery	•	•				•			
Cabbage (Red, Green)	•	•							
Corn	•	•				•			
Chili	•	•							
Garlic	•	•		•	•			•	•
Green Bell	•								
Green Pea	•	•				•			
Leek	•	•			•				
Mushroom	•	•		•	•				
Onion	•	•		•	•	•			•
Parsley	•	•				•			
Purple Carrot	•				•				
Red Beet	•								
Red Bell Pepper	•								
Red Carrot	•				•				
Spinach	•	•			•	•			



**JAKARTA**  
Wisma Bumiputera 8<sup>th</sup> Floor  
Jl. Jenderal Sudirman Kav. 75  
Jakarta 12910 – INDONESIA  
Phone: 62-21-5703807, 5224502  
Fax: 62-21-5710401  
Email: contact@ptgmc.com  
Website: www.ptgmc.com

**BANDUNG**  
Komplek Taman Kopo Indah III  
Blok E 4 No 2, Rt 02/Rw 022  
Desa Mekar Rahayu  
Kec. Marga Asih - Bandung 40218  
Telp 022-5416521, 65448213  
Email: bandung@ptgmc.com

**SEMARANG**  
Jl. Raya Semarang-Demak Km. 5  
No. 35, Semarang  
Phone: 62-24-6584726  
Fax: 62-24-6582294  
Email: semarang@ptgmc.com

**SURABAYA**  
Jl. Rungkut Industri III/25A, Surabaya  
Phone: 62-31-8430512, 8430572  
Fax: 62-31-8430682  
Email: surabaya@ptgmc.com

**MEDAN**  
Jl. Gaperta Komplek Piazza Residence  
Blok C No. 18, Medan  
Phone: 62-61-8473380, 8473403  
Fax: 62-61-8473403  
Email: medan@ptgmc.com

# PRODUCT TYPE



OLEORESINS & ESSENTIAL OILS	Type				
	Oleoresin	Aqua Spice	Plator	Powder	Oil
Black Pepper Natural	•				
Black Pepper Decolourised	•				
White Pepper	•	•	•		
Turmeric	•	•		•	
Capsicum	•	•	•		
Capsicum Decolourised	•				
Ginger	•	•			
Celery	•	•			
Nutmeg	•	•	•		
Marigold	•				
Paprika	•	•			
Cassia	•	•	•		
Clove Bud	•				
Clove		•	•		
Cardamom			•		
Onion	•				
Garlic	•				
Anethol CODE:100865939					•
Aniseed Star CODE:100865928					•
Eucalyptus CODE:100865938					•
Menthol Chrystal					•
Peppermint					•



MARINE PRODUCTS	Type				
	Powder	Flake	Slice	Sheet	Roll
Seaweed (Nori)	•	•	•	•	•
Carragenan	•				
kombu	•				
Fish Collagen	•				
Spirulina	•				
Oyster	•				



MEAT & SEAFOOD	Type			
	Powder	Extract	Flavor	Fat
Chicken	•		•	•
Salmon	•		•	
Shrimp	•		•	
Beef Bone		•		

HYDROLIZED VEGETABLE PROTEIN - EXTRACT & PROCESS FLAVORING	YEAST	Type
		Powder
HVP (PVH JED, OVP-L, Protex)		•
Yeast Extract		•
(Savory Mate, chesemate, Flavormate)		
Process Flavoring (chicken, beef, seafood)		•

FOOD ADDITIVES	Type	
	Powder	Liquid
Dextrose Monohydrate	•	
Maltodextrine	•	
Calcium Carbonate	•	
Magnesium Carbonate	•	
Sodium Bicarbonate	•	
Soy Milk	•	
Sweetener	•	
Potassium Sorbate	•	
Glucose Syrup		•
Lactose	•	
CMC	•	
Skim Milk	•	



**JAKARTA**  
Wisma Bumiputera 8<sup>th</sup> Floor  
Jl. Jenderal Sudirman Kav. 75  
Jakarta 12910 – INDONESIA  
Phone: 62-21-5703807, 5224502  
Fax: 62-21-5710401  
Email: contact@ptgmc.com  
Website: www.ptgmc.com

**BANDUNG**  
Komplek Taman Kopo Indah III  
Blok E 4 No 2, Rt 02/Rw 022  
Desa Mekar Rahayu  
Kec. Marga Asih - Bandung 40218  
Telp 022-5416521, 65448213  
Email: bandung@ptgmc.com

**SEMARANG**  
Jl. Raya Semarang-Demak Km. 5  
No. 35, Semarang  
Phone: 62-24-6584726  
Fax: 62-24-6582294  
Email: semarang@ptgmc.com

**SURABAYA**  
Jl. Rungkut Industri III/25A, Surabaya  
Phone: 62-31-8430512, 8430572  
Fax: 62-31-8430682  
Email: surabaya@ptgmc.com

**MEDAN**  
Jl. Gaperta Komplek Piazza Residence  
Blok C No. 18, Medan  
Phone: 62-61-8473380, 8473403  
Fax: 62-61-8473403  
Email: medan@ptgmc.com

# PRODUKT TYPE

ANTI OXIDANTS	Type	
	Liquid	Powder
NATURAL		
* Rosemary	•	•
* Tocopherol	•	
* Green Tea		•
* Spearmint		•
* Liquid & Powder Blend	•	•
SYNTHETIC		
* Liquid TBHQ	•	
* Liquid BHA	•	
* Liquid BHT	•	
* Liquid Blend	•	
* Ascorbyl Palmitate + Mix Tocopherol (APTL)	•	

ANTI MICROBIAL	Type	
	Liquid	Powder
NATURAL		
* BactoCEASE NV	•	•
* Shield NV	•	•
SYNTHETIC		
* BactoCEASE	•	
* Shield	•	

SWEET FLAVOR	Type
	Liquid
Fruity	•
Palm Sugar	•
Tea	•
Milk (dairyboost)	•
Smoothenol	•
Sweeteas	•
Coffee	•

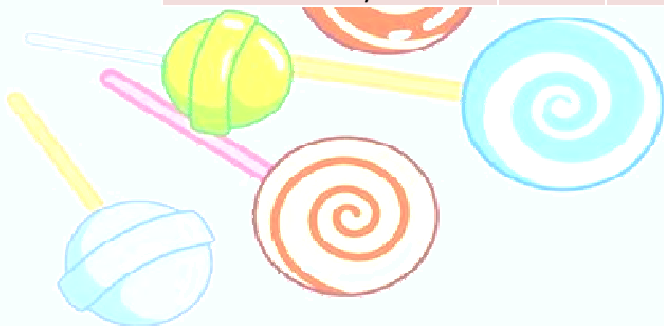
SAVORY FLAVOR	Type
	Powder
Potato (Mashed, Cooked)	•
Cheese (White, Sweet)	•
Sour Cream	•
Beef (Boiled, Roasted)	•
Chicken (Boiled, Roasted, Fried)	•
Meatball	•

MODIFIED STARCH	Type
	Powder
Corn/Potato/Tapioca Base	•
Red Bean Powder	•
Mungbean Powder	•

COFFEE & CREAM	Type	
	Powder	Flavor
Instant Coffee	•	•
Non Dairy Creamer	•	
Golden Foam	•	

NATURAL COLOR	Type	
	Powder	Liquid
Pink, Red, Purple		
Red Beet	•	•
Purple Carrot	•	•
Blackcurrant	•	•
Carrot	•	•
Elderberry	•	•

TEA & HERBS	Type	
	Powder	Flavor
Green Tea	•	•
Black Tea	•	•
White Tea	•	•
Matcha	•	•
Oolong Tea	•	
Grass Jelly/Mesona	•	
Goji Berry	•	
Echinacea Extract 4% Chicoric Acid	•	
Panax Ginseng Extract 2% Ginsenosid	•	•
Chrysanthemum	•	•
Sodium Copper Chlorophyll	•	
Safflower	•	
Honey	•	•
Ginkgo Biloba Extract	•	
Siberian Ginseng Extract	•	
Red Yeast Rice Extract	•	



# APPLICATION

FRUITS	APPLICATION									
	Baby Food	Snack & Noodle	Meat Processing	Sauce & Dressing	Seasoning & Premix	Beverages	Bakery & Biscuit	Dairy	Sweet Goods & Confectionary	Herbs & Pharmaceuticals
Acai	•				•	•	•	•	•	•
Acerola	•				•	•	•	•	•	•
Apple	•				•	•	•	•	•	•
Apricot	•				•	•	•	•	•	•
Banana	•				•	•	•	•	•	•
Blackberry	•				•	•	•	•	•	•
Blackcurrant	•				•	•	•	•	•	•
Blueberry	•				•	•	•	•	•	•
Cherry	•				•	•	•	•	•	•
Cranberry	•				•	•	•	•	•	•
Coconut					•	•	•	•	•	•
Cucumber		•								
Date	•				•	•	•	•	•	•
Elderberry	•				•	•	•	•	•	•
Grape	•				•	•	•	•	•	•
Grapefruit	•				•	•	•	•	•	•
Guava	•				•	•	•	•	•	•
Kiwi	•				•	•	•	•	•	•
Lemon	•				•	•	•	•	•	•
Lime	•				•	•	•	•	•	•
Lychee	•				•	•	•	•	•	•
Mandarin	•				•	•	•	•	•	•
Mango	•				•	•	•	•	•	•
Melon	•				•	•	•	•	•	•
Orange	•				•	•	•	•	•	•
Papaya	•				•	•	•	•	•	•
Passion Fruit	•				•	•	•	•	•	•
Peach	•				•	•	•	•	•	•
Pear	•				•	•	•	•	•	•
Pineapple	•				•	•	•	•	•	•
Plum	•				•	•	•	•	•	•
Pomegranate	•				•	•	•	•	•	•
Prune	•				•	•	•	•	•	•
Pumpkin	•	•					•			
Raspberry	•				•	•	•	•	•	•
Strawberry	•				•	•	•	•	•	•
Starfruits	•				•	•	•	•	•	•
Tomato	•	•	•	•	•	•	•	•	•	•
Watermelon	•				•	•	•	•	•	•
Yumberry	•				•	•	•	•	•	•

VEGETABLES	APPLICATION									
	Baby Food	Snack & Noodle	Meat Processing	Sauce & Dressing	Seasoning & Premix	Beverages	Bakery & Biscuit	Dairy	Sweet Goods & Confectionary	Herbs & Pharmaceuticals
Artichoke	•	•		•	•		•			
Asparagus	•	•		•	•	•	•	•		
Broccoli	•	•		•	•	•	•	•		
Carrot	•	•	•	•	•	•	•	•		
Celeriac		•	•	•	•		•			
Celery		•	•	•	•		•			
Cabbage (Red, Green)		•								
Corn	•	•					•			
Chili		•	•	•	•		•			
Garlic		•	•	•	•		•			
Green Bell		•	•	•	•					
Green Pea	•	•								
Leek	•	•	•	•	•		•			
Mushroom	•	•	•	•	•		•			
Onion	•	•	•	•	•		•			
Parsley		•	•	•	•					
Purple Carrot	•	•				•	•	•		
Red Beet	•	•				•	•	•		
Red Bell Pepper	•	•	•	•	•					
Red Carrot	•	•				•	•	•		
Spinach	•	•				•	•	•		



**JAKARTA**  
 Wisma Bumiputera 8<sup>th</sup> Floor  
 Jl.Jenderal Sudirman Kav. 75  
 Jakarta 12910 – INDONESIA  
 Phone: 62-21-5708807, 5224502  
 Fax: 62-21-5710401  
 Email: contact@ptgmc.com  
 Website: www.ptgmc.com

**BANDUNG**  
 Komplek Taman Kopo Indah III  
 Blok E 4 No 2, Rt 02/Rw 022  
 Desa Mekar Rahayu  
 Kec. Marga Asih - Bandung 40218  
 Telp 022-5416521, 65448213  
 Email: bandung@ptgmc.com

**SEMARANG**  
 Jl. Raya Semarang-Demak Km. 5  
 No. 35, Semarang  
 Phone: 62-24-6584726  
 Fax: 62-24-6582294  
 Email: semarang@ptgmc.com

**SURABAYA**  
 Jl.Rungkut Industri III/25A, Surabaya  
 Phone: 62-31-8430512, 8430572  
 Fax: 62-31-8430682  
 Email: surabaya@ptgmc.com

**MEDAN**  
 Jl. Gaperta Komplek Piazza Residence  
 Blok C No. 18, Medan  
 Phone: 62-61-8473380, 8473403  
 Fax: 62-61-8473403  
 Email: medan@ptgmc.com

# APPLICATION

OLEORESINS & ESSENTIAL OILS	APPLICATION									
	Baby Food	Snack & Noodle	Meat Processing	Sauce & Dressing	Seasoning & Premix	Beverages	Bakery & Biscuit	Dairy	Sweet Goods & Confectionary	Herbs & Pharmaceuticals
Black Pepper Natural		•	•	•	•					
Black Pepper Decolourised		•	•	•	•	•				
White Pepper		•	•	•	•	•				
Turmeric		•	•	•	•	•				•
Capsicum		•	•	•	•	•				
Capsicum Decolourised		•	•	•	•	•				•
Ginger		•	•	•	•	•			•	•
Celery		•	•	•	•	•				
Nutmeg		•	•	•	•	•				
Marigold		•	•	•	•	•				
Paprika		•	•	•	•	•				
Cassia		•	•	•	•	•				
Clove Bud										•
Clove		•	•	•	•	•				•
Cardamom				•	•					
Onion		•	•	•	•	•				
Garlic		•								
Anethol CODE:100865939										•
Aniseed Star CODE:100865928										•
Eucalyptus CODE:100865938									•	•
Menthol Chrystal									•	•
Peppermint									•	•

MARINE PRODUCTS	APPLICATION									
	Baby Food	Snack & Noodle	Meat Processing	Sauce & Dressing	Seasoning & Premix	Beverages	Bakery & Biscuit	Dairy	Sweet Goods & Confectionary	Herbs & Pharmaceuticals
Seaweed (Ulva Lactuca)		•	•	•	•		•			
Seaweed (Nori)		•	•	•	•		•			
Carragenan kombu					•	•				
Fish Collagen						•				•
Spirulina						•				•
Oyster				•	•					

MEAT & SEAFOOD	APPLICATION									
	Baby Food	Snack & Noodle	Meat Processing	Sauce & Dressing	Seasoning & Premix	Beverages	Bakery & Biscuit	Dairy	Sweet Goods & Confectionary	Herbs & Pharmaceuticals
Chicken	•	•	•	•	•		•			•
Salmon	•	•	•	•	•		•			
Shrimp	•	•	•	•	•		•			
Beef Bone		•	•	•	•		•			

FOOD ADDITIVES	APPLICATION									
	Baby Food	Snack & Noodle	Meat Processing	Sauce & Dressing	Seasoning & Premix	Beverages	Bakery & Biscuit	Dairy	Sweet Goods & Confectionary	Herbs & Pharmaceuticals
Dextrose Monohydrate		•		•	•		•	•		•
Maltodextrine		•		•	•		•	•		•
Calcium Carbonate	•						•	•	•	•
Magnesium Carbonate							•	•		
Sodium Bicarbonate							•	•		
Soy Milk	•					•	•	•		
Sweetener		•		•	•	•	•	•	•	•
Potassium Sorbate						•	•	•	•	•
Glucose Syrup						•	•	•	•	•
Lactose	•	•			•	•	•	•	•	•
CMC		•	•	•	•	•	•	•	•	•
Skim Milk	•			•	•	•	•	•	•	•

HYDROLIZED VEGETABLE PROTEIN - EXTRACT & PROCESS FLAVORING	YEAST	APPLICATION								
		Baby Food	Snack & Noodle	Meat Processing	Sauce & Dressing	Seasoning & Premix	Beverages	Bakery & Biscuit	Dairy	Sweet Goods & Confectionary
HVP : PVH JED, OVP-L, Protex			•	•	•	•		•		
Yeast Extract :										
Savory Mate, chesemate, Flavormate			•	•	•	•		•		•
Process Flavoring : chicken, beef, seafood			•	•	•	•		•		

COFFEE & CREAM	APPLICATION									
	Baby Food	Snack & Noodle	Meat Processing	Sauce & Dressing	Seasoning & Premix	Beverages	Bakery & Biscuit	Dairy	Sweet Goods & Confectionary	Herbs & Pharmaceuticals
Instant Coffee						•	•	•	•	
Non Dairy Creamer						•	•	•	•	
Golden Foam						•	•	•	•	

**JAKARTA**  
 Wisma Bumiputera 8<sup>th</sup> Floor  
 Jl.Lenderal Sudirman Kav. 75  
 Jakarta 12910 – INDONESIA  
 Phone: 62-21-5703807, 5224502  
 Fax: 62-21-5710401  
 Email: contact@ptgmc.com  
 Website: www.ptgmc.com

**BANDUNG**  
 Komplek Taman Kopo Indah III  
 Blok E 4 No 2, Rt 02/Rw 022  
 Desa Mekar Rahayu  
 Kec. Marga Asih - Bandung 40218  
 Telp 022-5416521, 65448213  
 Email: bandung@ptgmc.com

**SEMARANG**  
 Jl. Raya Semarang-Demak Km. 5  
 Blok E 4 No 2, Rt 02/Rw 022  
 No. 35, Semarang  
 Phone: 62-24-6584726  
 Fax: 62-24-6582294  
 Email: semarang@ptgmc.com

**SURABAYA**  
 Jl. Rungkut Industri III/25A, Surabaya  
 Phone: 62-31-8430512, 8430572  
 No. 35, Semarang  
 Phone: 62-31-8430682  
 Fax: 62-31-8430682  
 Email: surabaya@ptgmc.com

**MEDAN**  
 Jl. Gaperta Komplek Piazza  
 Residence Blok C No. 18, Medan  
 Phone: 62-61-8473380, 8473403  
 Fax: 62-61-8473403  
 Email: medan@ptgmc.com

# APPLICATION

ANTI OXIDANTS	APPLICATION								
	Snack & Noodle	Meat Processing	Sauce & Dressing	Seasoning & Premix	Beverages	Bakery & Biscuit	Dairy	Sweet Goods & Confectionary	Herbs & Pharmaceuticals
<b>NATURAL</b>									
* Rosemary	•	•	•	•	•	•		•	•
* Tocopherol	•	•	•	•	•	•		•	•
* Green Tea	•	•	•	•	•	•			
* Spearmint	•	•	•	•	•	•			
* Liquid & Powder Blend	•	•	•	•	•	•		•	•
<b>SYNTHETIC</b>									
* Liquid TBHQ									•
* Liquid BHA			•	•		•		•	•
* Liquid BHT			•	•		•		•	•
* Liquid Blend	•	•	•	•	•	•		•	•
* Ascorbyl Palmitate + Mix Tocopherol (APTL)	•								

SAVORY FLAVOR	APPLICATION		
	Meat Processing	Seasoning & Premix	Bakery & Biscuit
Potato (Mashed, Cooked)		•	•
Cheese (White, Sweet)		•	•
Sour Cream		•	•
Beef (Boiled, Roasted)	•	•	•
Chicken (Boiled, Roasted, Fried)	•	•	•
Meatball	•	•	•

ANTI MICROBIAL	APPLICATION				
	Snack & Noodle	Meat Processing	Sauce & Dressing	Seasoning & Premix	Bakery & Biscuit
<b>NATURAL</b>					
* BactoCEASE NV		•			
* Shield NV	•		•	•	
<b>SYNTHETIC</b>					
* BactoCEASE		•			
* Shield	•		•	•	•

TEA & HERBS	APPLICATION									
	Baby Food	Snack & Noodle	Meat Processing	Sauce & Dressing	Seasoning & Premix	Beverages	Bakery & Biscuit	Dairy	Sweet Goods & Confectionary	Herbs & Pharmaceuticals
Green Tea						•	•	•	•	•
Black Tea						•	•	•	•	•
White Tea						•	•	•	•	•
Matcha					•	•	•	•	•	•
Oolong Tea						•	•	•	•	•
Grass Jelly/Mesona						•				•
Goji Berry						•				•
Echinacea Extract 4% Chicoric Acid						•				•
Panax Ginseng Extract 2% Ginsenosid						•			•	•
Chrysanthemum						•			•	•
Sodium Copper Chlorophyll										•
Safflower										•
Honey	•	•		•		•	•	•	•	•
Ginkgo Biloba Extract						•				•
Siberian Ginseng Extract						•				•
Red Yeast Rice Extract										•

SWEET FLAVOR	APPLICATION									
	Baby Food	Snack & Noodle	Meat Processing	Sauce & Dressing	Seasoning & Premix	Beverages	Bakery & Biscuit	Dairy	Sweet Goods & Confectionary	Herbs & Pharmaceuticals
Fruity	•					•	•	•	•	•
Palm Sugar	•					•	•	•	•	•
Tea	•					•	•	•	•	•
Milk (dairyboost)				•	•	•	•	•	•	•
Smoothenol					•	•	•	•	•	•
Sweeteaze					•	•	•	•	•	•
Coffee						•	•	•	•	•

MODIFIED STARCH	APPLICATION									
	Baby Food	Snack & Noodle	Meat Processing	Sauce & Dressing	Seasoning & Premix	Beverages	Bakery & Biscuit	Dairy	Sweet Goods & Confectionary	Herbs & Pharmaceuticals
Corn/Potato/Tapioca Base		•	•	•			•	•	•	
Red Bean Powder		•			•	•	•	•		
Mungbean Powder		•			•	•	•	•		

NATURAL COLOR	APPLICATION					
	Soft Drinks	Sugar & Confectionary	Ice Cream	Dairy	Decoration & Coating	Sauce & Seasoning
Pink, Red, Purple						
Red Beet		•			•	
Purple Carrot		•	•	•	•	•
Blackcurrant		•	•	•	•	•
Carrot		•	•	•	•	•
Elderberry		•	•	•	•	•



**JAKARTA**  
 Wisma Bumiputera 8<sup>th</sup> Floor  
 Jl. Jenderal Sudirman Kav. 75  
 Jakarta 12910 – INDONESIA  
 Phone: 62-21-5703807, 5224502  
 Fax: 62-21-5710401  
 Email: contact@ptgmc.com  
 Website: www.ptgmc.com

**BANDUNG**  
 Komplek Taman Kopo Indah III  
 Blok E 4 No 2, Rt 02/Rw 022  
 Desa Mekar Rahayu  
 Kec. Marga Asih - Bandung 40218  
 Telp 022-5416521, 65448213  
 Email: bandung@ptgmc.com

**SEMARANG**  
 Jl. Raya Semarang-Demak Km. 5  
 No. 35, Semarang  
 Phone: 62-24-6584726  
 Fax: 62-24-6582294  
 Email: semarang@ptgmc.com

**SURABAYA**  
 Jl. Rungkut Industri III/25A, Surabaya  
 Phone: 62-31-8430512, 8430572  
 Fax: 62-31-8430682  
 Email: surabaya@ptgmc.com

**MEDAN**  
 Jl. Gaperta Komplek Piazza Residence  
 Blok C No. 18, Medan  
 Phone: 62-61-8473380, 8473403  
 Fax: 62-61-8473403  
 Email: medan@ptgmc.com